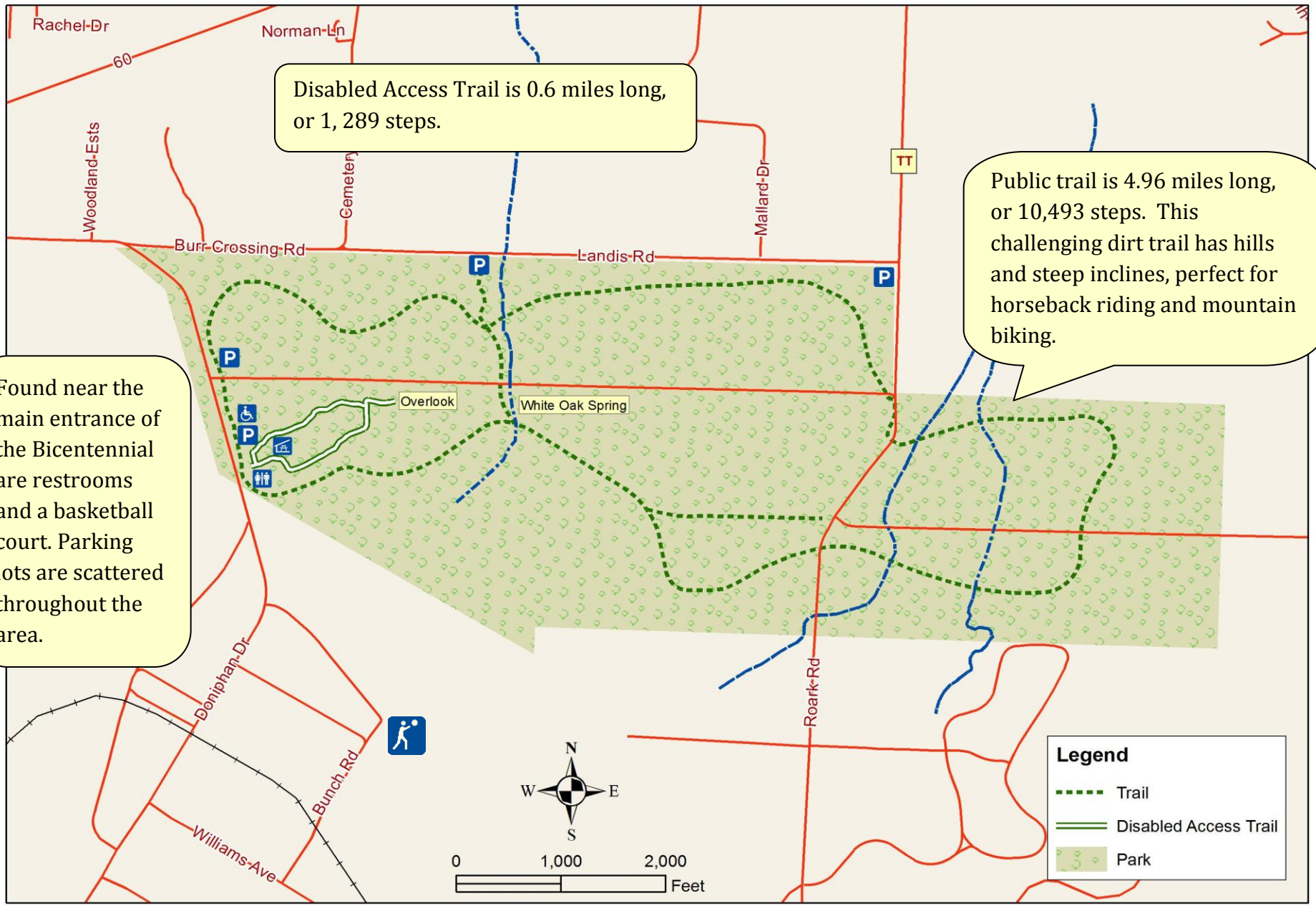


Bicentennial Conservation Area

3001 Doniphan Dr.
Neosho, MO 64850



Disabled Access Trail is 0.6 miles long, or 1,289 steps.

Public trail is 4.96 miles long, or 10,493 steps. This challenging dirt trail has hills and steep inclines, perfect for horseback riding and mountain biking.

Found near the main entrance of the Bicentennial are restrooms and a basketball court. Parking lots are scattered throughout the area.

Legend

- Trail
- Disabled Access Trail
- Park